

built environment collective
<BE • Collective>
engineered design

.....

Company Profile

.....

3rd Edition

becollective.net

.....

.....

“ We challenge mediocrity & strive towards Client relationships
& project team associations where a collective approach is
championed in recognition of enhanced outcomes. ”

John Tuxworth
Managing Director
BE Collective

CONTENTS

Our Company	- 01
Our People	- 01
Our Capabilities	- 05
Our Expertise	- 07
Project Experience	- 09
Values & Visions	- 15



Project: Somerset Civic Centre, Esk
Contribution: Structural | Civil
[AIA Regional Building of the Year, 2013]

.....

Our Company

Built Environment Collective is an award winning Australian-based design & project management consultancy offering enhanced Client outcomes via integrated solutions & a holistic approach to design & construction.

Founded on the 18-year international experience of Managing Director, John Tuxworth, the company provides a unique value-adding contribution across a range of market sectors and project types.

Our People

BE Collective is comprised of diligent, passionate consultants, who utilise their professional expertise to facilitate optimal Client outcomes.

We maintain a rigorous approach to Continuing Professional Development (CPD). In addition of the commitment required by the relevant institutes and councils, CPD targets are mandated as part of each staff member's employment contract.

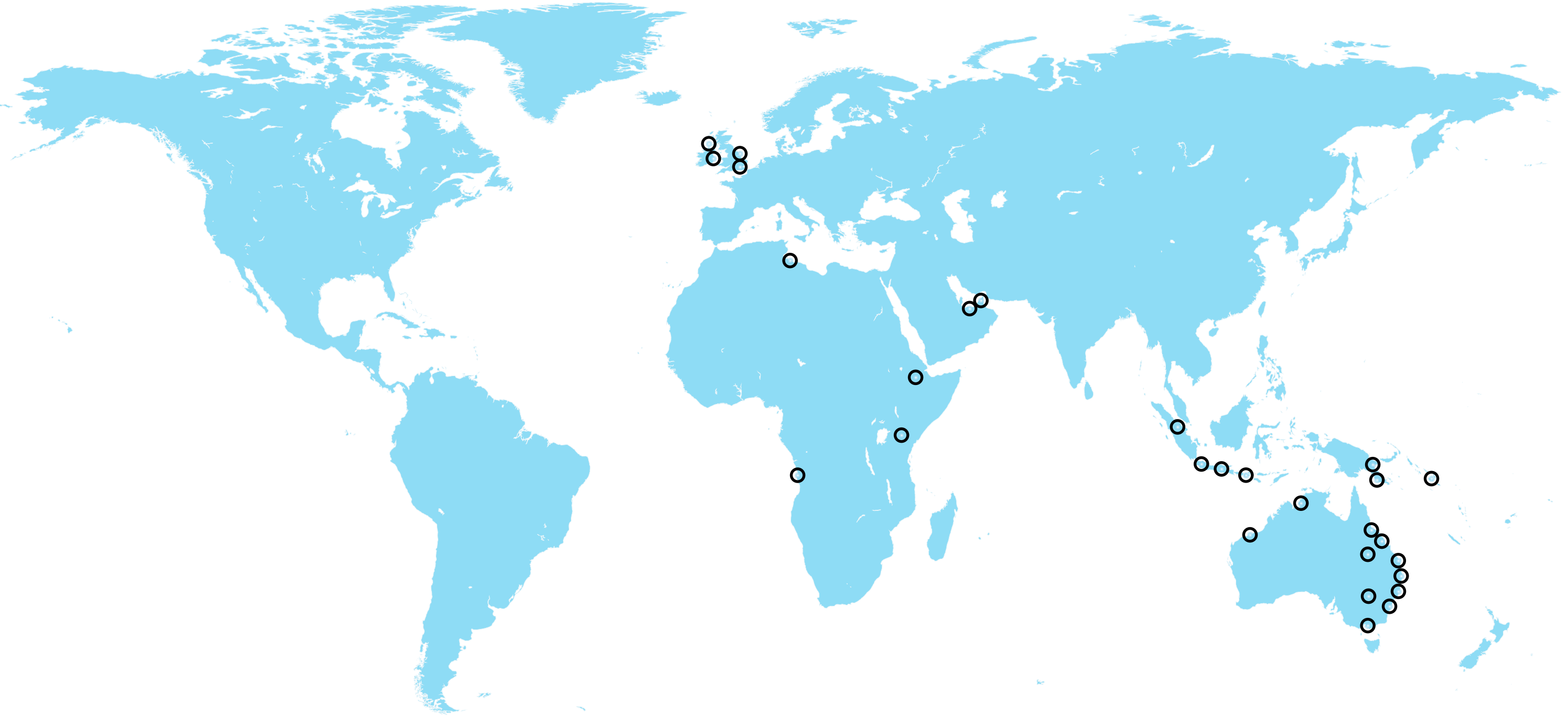
The Managing Director, John Tuxworth, contributes technically across all disciplines. John's tertiary education started at QUT's school of Civil Engineering. Following this John spent several years abroad working for Maunsell (Aecom) in Indonesia, Waterman Partnership in London, and Michael Punch and Partners in Dublin.

John's interest in becoming a multi-discipline building professional saw him undertake architectural studies at the University of Westminster in London, and he has also undertaken MBA studies through Latrobe University. John is also one of the few structural/civil specialists to be accredited as a Green Star Professional.



Project: Kurilpa Tower, Brisbane
Contribution: Structural | Civil | ESD

From our head office in Brisbane we have delivered projects as far as Angola, on the west coast of Africa, to Tonga in the Pacific.



Our Capabilities

Our Team of experienced professionals employ advanced analytical tools to drive highly functional & fit-for-purpose development.

We design buildings, structures, and operational works to a Client's detailed specifications and eliminate unnecessary costs, whilst still achieving compliance with Australian and international building codes. A strong focus on collaboration with other design team members and the contracting team benefits our clients by integrating a larger pool of ideas and experience.

Our designs respond positively to the local environment with a focus on reduced maintenance and operating costs. We offer a multi-disciplined experience to assist with the reduction of materials and utilities requirements, and the maximisation of natural light and ventilation.

In addition, we offer experience with environmentally sustainable systems such as solar heating, rainwater harvesting and swales. Our innovative approach to buildability is based on construction techniques which lend themselves to safety and efficiency.

We work hard to ensure that Client objectives and outcomes are clearly defined from the outset. Our hands-on approach to project management assists to drive each project towards delivery, with an emphasis on quality, cost and program.



[Image courtesy Katsushia Kida]

Project: Motevetro, London
Contribution: Structural

Our Expertise

We have significant experience in the design & documentation of developments both in Australia & abroad, across the company's core disciplines of structures, civil infrastructure, hydraulic services, & esd.

- > **Structures**
- > **Civil Infrastructure**
- > **Hydraulic Services**
- > **ESD (Ecologically Sustainable Development)**

Structures

- > Multi-storey & low rise
- > Residential including architecturally designed homes
- > Commercial, education, municipal
- > Industrial, heavy industry, petrochemical

Civil Infrastructure

- > Stormwater management
- > Engineering services
- > Subdivisions
- > Roads
- > Programme & Disaster Management

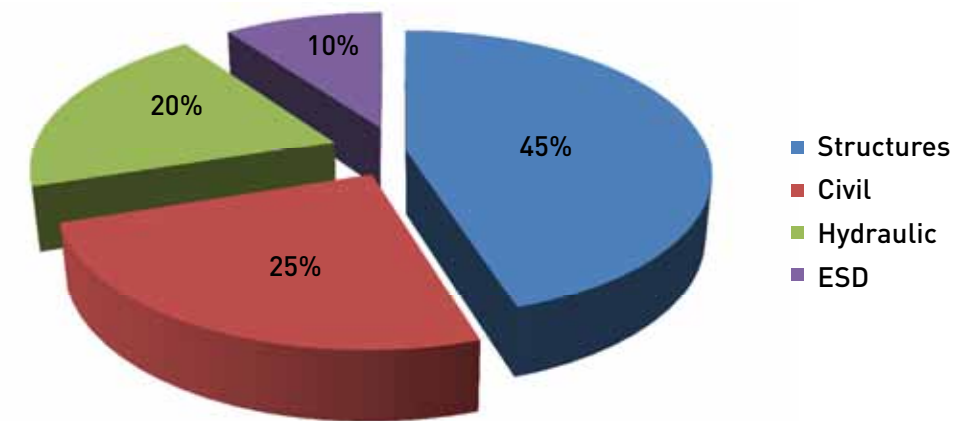
Hydraulic Services

- > Multi-storey & low rise
- > Luxury homes
- > Commercial, education, municipal
- > Water reuse strategies

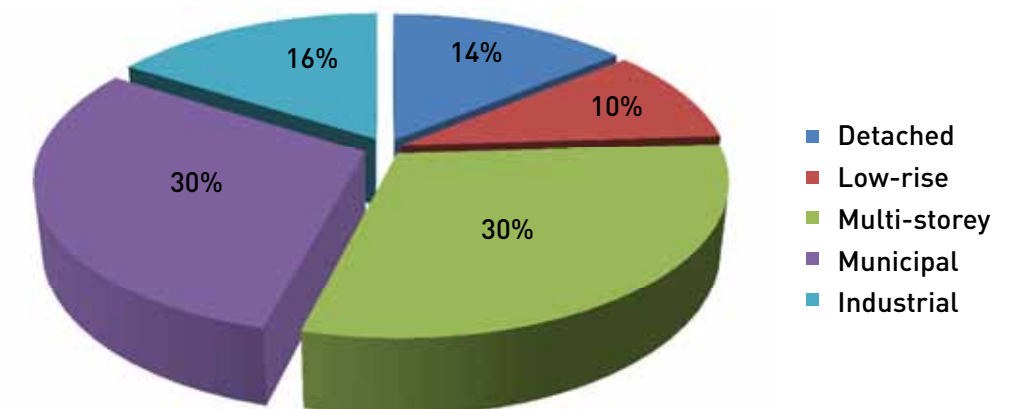
[**STATE FINALIST** - 2012 Engineering Excellence Awards: **Buildings & Structures**]

[**STATE FINALIST** - 2012 Engineering Excellence Awards: **Environment Category**]

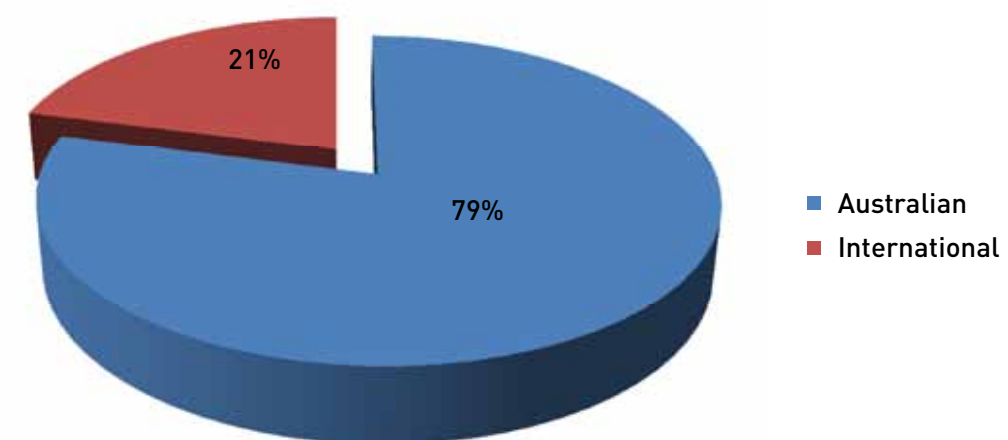
Our Business



> by Discipline



> by Development Type



> by Region



01

PROJECT: Inwood St, Woolloowin
SIGNIFICANCE: Architectural Homes | Structures | ESD

The Inwood St project is a small residential addition which is simply a visual delight. The project features:

- ▶ green roof
- ▶ decorative, textured off-form concrete walls
- ▶ architectural steel work

BE Collective undertook finite element analysis in order to make the roof size and profile as slender as possible. The dominant roof form appears to float unsupported due to the placement and slenderness of load-bearing elements. Every structural component of this project was exhaustively refined and integrated to provide the optimal architectural outcome, with an amazing result.

02

PROJECT: QUT Library, Kelvin Grove
SIGNIFICANCE: Education | Multi-storey | Structures | ESD

Our input on this project contributed to it being awarded a 2012 AIA Brisbane Regional Commendation.

The BE Collective Team supported alterations and additions to libraries at both Gardens Point and Kelvin Grove campuses. There were various aspects to the engagement including a new multi-storey addition to the Kelvin Grove library, a new façade, and a relocation of compactus.

Refurbishment of the Kelvin Grove library provided great opportunities for ESD initiatives and functionality. A variety of facade treatments and ventilation strategies were modelled to minimise energy usage and carbon consumption. A 5-floor extension to the library is now a revised entry statement, and provision of a new grand stair has enabled complete reconfiguration of the internal spaces.





03

PROJECT: Belamar Towers, Angola
SIGNIFICANCE: Multi-storey | Structures | Hydraulic Services

An exciting high rise in a developing country. This project epitomises the BE Collective team's ability to complete a multi-discipline, cross-continent, cross-language product.

Our team provided structural and hydraulic engineering services for these two 25-storey apartment towers located in Talatona, an emerging suburb 15km south from the capital, Luanda. The development comprises 468 apartments per tower, approximately 600 parking spaces, communal areas throughout several podium levels, including two swimming pools, a spa, and spa salons.

Floors were designed as unbonded post-tensioned flat plates, achieving longer spans with less weight, smaller columns and increased NLA. The post-tensioning strand layout was coordinated with integral horizontal services runs within the depth of the slab - in order to satisfy the client's requirement for reduced floor to floor heights.

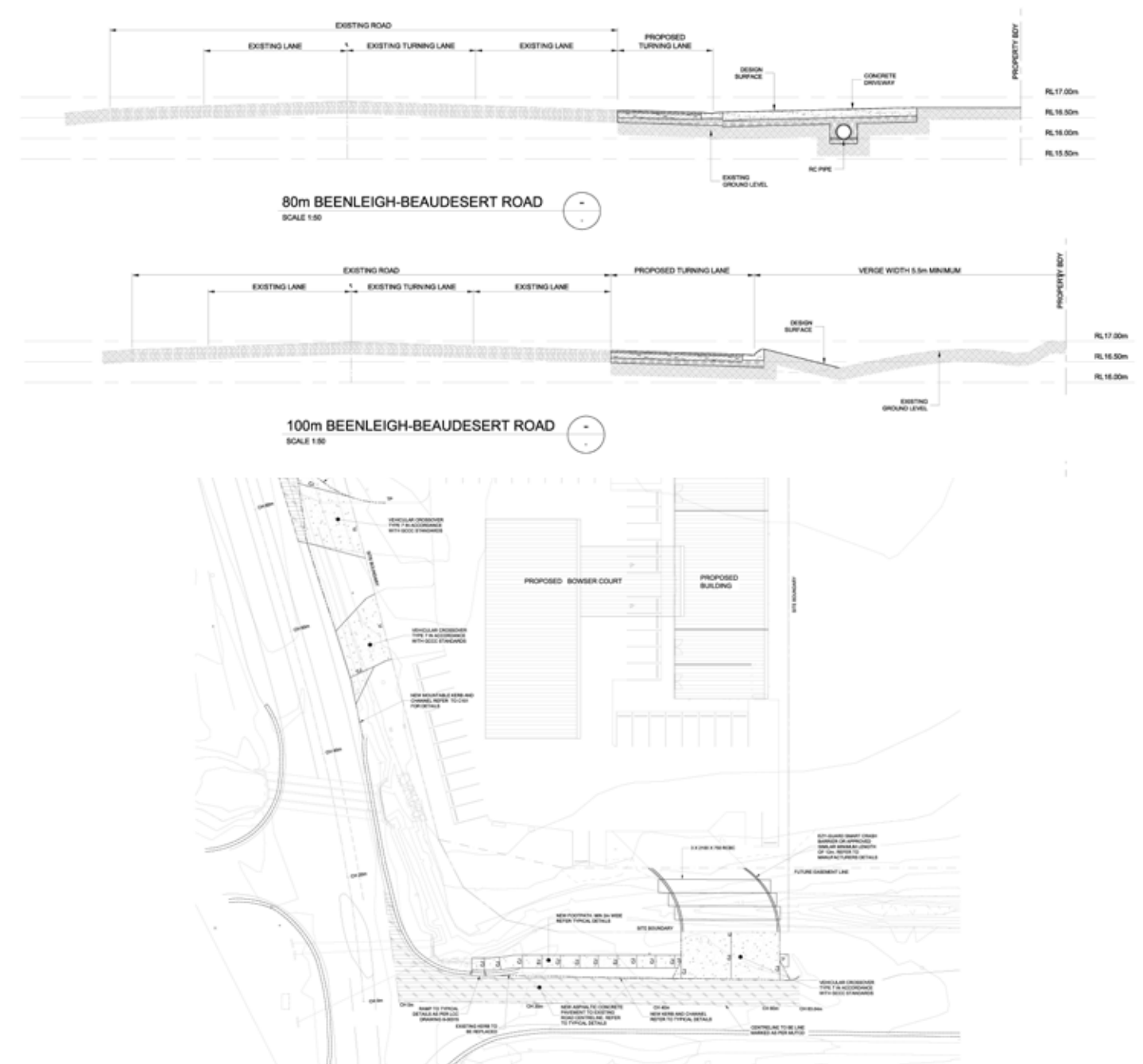
04

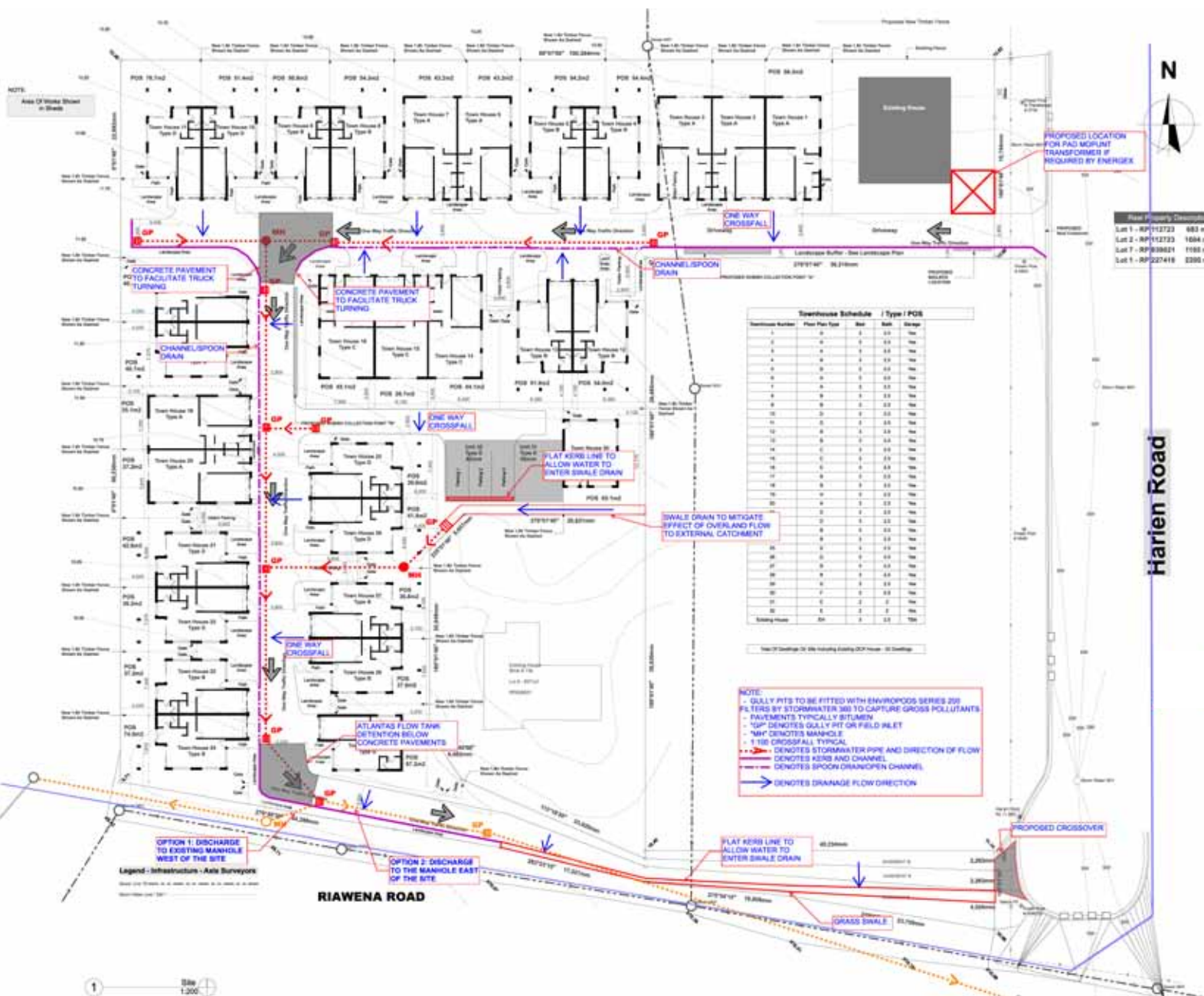
PROJECT: United Petroleum, Windaroo
SIGNIFICANCE: Civil Infrastructure | Hydraulic Services

BE Collective was commissioned to provide civil infrastructure and hydraulic services for this new petrol station.

Civil works included road widening to Beenleigh-Beaudesert and Bannockburn Roads, redirection of road reserve drainage culverts, and pedestrian fencing in support of Operational Works Approvals. Control of stormwater quality and quantity has been achieved via bio-retention basins.

Hydraulic services design addressed fire, rainwater, and commercial tenancy requirements including trade waste.





05

PROJECT: Harlen Road, Salisbury
SIGNIFICANCE: Civil Infrastructure

BE Collective provided stormwater management and engineering services in support of this new development comprising 35 new townhouses across three existing allotments.

On-site stormwater detention to mitigate peak post-development flows was achieved by the use of shallow below-ground detention basins positioned under concrete pavements.

06

PROJECT: University of Queensland Clinical School, Bundaberg
SIGNIFICANCE: Structures | Civil Infrastructure | Hydraulic

BE Collective was commissioned to provide structural, civil and hydraulic consulting services for the new UQ Rural Clinical School at Bundaberg.

The facility will be utilised by both the University of Queensland and the hospital for training new health professionals.

The building sits elevated above the modelled Q100 flood level, with car parking and building services located in the full-height undercroft. Building structure is comprised of a suspended reinforced concrete floor and load-bearing tilt-up wall elements.

Whilst not a formal project requirement of the Council, the civil design incorporates in-ground rainwater detention following recommended best practice. Hot water is supplied from combined instantaneous and solar thermal systems. Reclaimed water has been adopted for toilet flushing.





07

PROJECT: 358 Wickham St,
Brisbane
SIGNIFICANCE: Multi-storey | ESD

This project consists of a 15-storey commercial (approx 24,000m² GFA) located at a prominent position on Wickham St. The Client has identified a premium return on investment will be obtained by achieving Green Star recognition and a high NABERS target.

BE Collective was appointed as ESD Consultants in 2011 for planning, documentation and construction phases of the project.

Our investigation of sustainable opportunities always begins with passive design. This passive-first approach combined with our cross-discipline engineering capabilities is redefining the expectations placed on engineering consultants in Australia.

.....

Our Values

We challenge mediocrity & strive towards Client relationships & project team associations where a collective approach is championed in recognition of enhanced outcomes.

We are acutely aware of the adverse impact that current development paradigms have on the Triple Bottom Line sustainability.

We believe in professionals adopting a multi-disciplinary perspective in delivering projects.

Our Vision

To be the first choice of Clients who value quality, & to be recognised as adding-value [as opposed being just another commodity service] - by providing creative solutions based on diversified skill and experience.

To lead positive triple-bottom-line change in the construction industry.

To found our business success on a passionate approach towards Continual Professional Development targets in excess of the commitment required by the relevant institutes and councils.

built environment collective

<BE • Collective>

engineered design

<http://becollective.net>

Brisbane (Head Office)
9 Hynes St, Fortitude Valley, QLD 4006
PO Box 928, Spring Hill, QLD 4004
+61 (0)7 3252 1001
brisbane@becollective.net

Sydney [Project Office]
98 Glebe Point Rd Glebe, NSW 2073
sydney@becollective.net

Port Moresby [Alliance Office]
S15 Gemini Place, Boroko NCD, Papua
New Guinea
pom@becollective.net